



# DISTRICT 567



**H&H**  
BUILDERS AND DEVELOPERS  
BUILDING DREAMS



# BAHRIA TOWN – AN URBAN HAVEN

Bahria Town Rawalpindi enjoys a central location with easy access to GT road, DHA, planned ring road and other key communities. It is unique in a way that it captures the mood of both the cities; the modernity of Islamabad and the historical spirit of the Trade Route city of Rawalpindi. Inspired by Paris's famed Champs-Élysées avenue, the main Boulevard Expressway houses multi-storied high-rise buildings, transforming it into one of the most sought-after commercial hubs of Rawalpindi.



International Standard Hospitals



World Class Educational Institutions



Sports and Entertainment Facilities



Recreation and Dining Facilities



Commercial and Business Districts



Emergency Rescue & Relief Services



Planned Infrastructure & Urban Development



Green Areas, Parks and a Zoo



WELCOME TO  
**DISTRICT 567**  
PRESENTING A MODERN WAY OF LIFE



Located at the heart of Bahria Town's upcoming Business District, **DISTRICT 567**, a product of H&H Developers, is hallmarkd by its aesthetically pleasing design, attention to detail, and a unique collection of exclusive units including shops, offices, and apartments that boast large open plan interiors equipped with world-class fittings designed to suit a modern way of living.

Easily Accessible Commercial Shops



Lower Ground, Ground & First Floor

State-of-the-art Furnished/Unfurnished Office Space



Second & Third Floor

Premium One, Two & Three Bedroom Apartments



Fourth to Seventh Floor

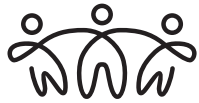
*ENDLESS POSSIBILITIES*  
**WITH DISTRICT 567**



Unique Design Aesthetic



Convenient  
Instalment Plan



Aspirational Lifestyle within  
a Thriving Community



Estimated Project Completion  
and Possession by June 2024



At the Heart of a  
Well-Connected  
Business District



Higher than Market Property  
Value Appreciation



Added Discount on  
Upfront Payment



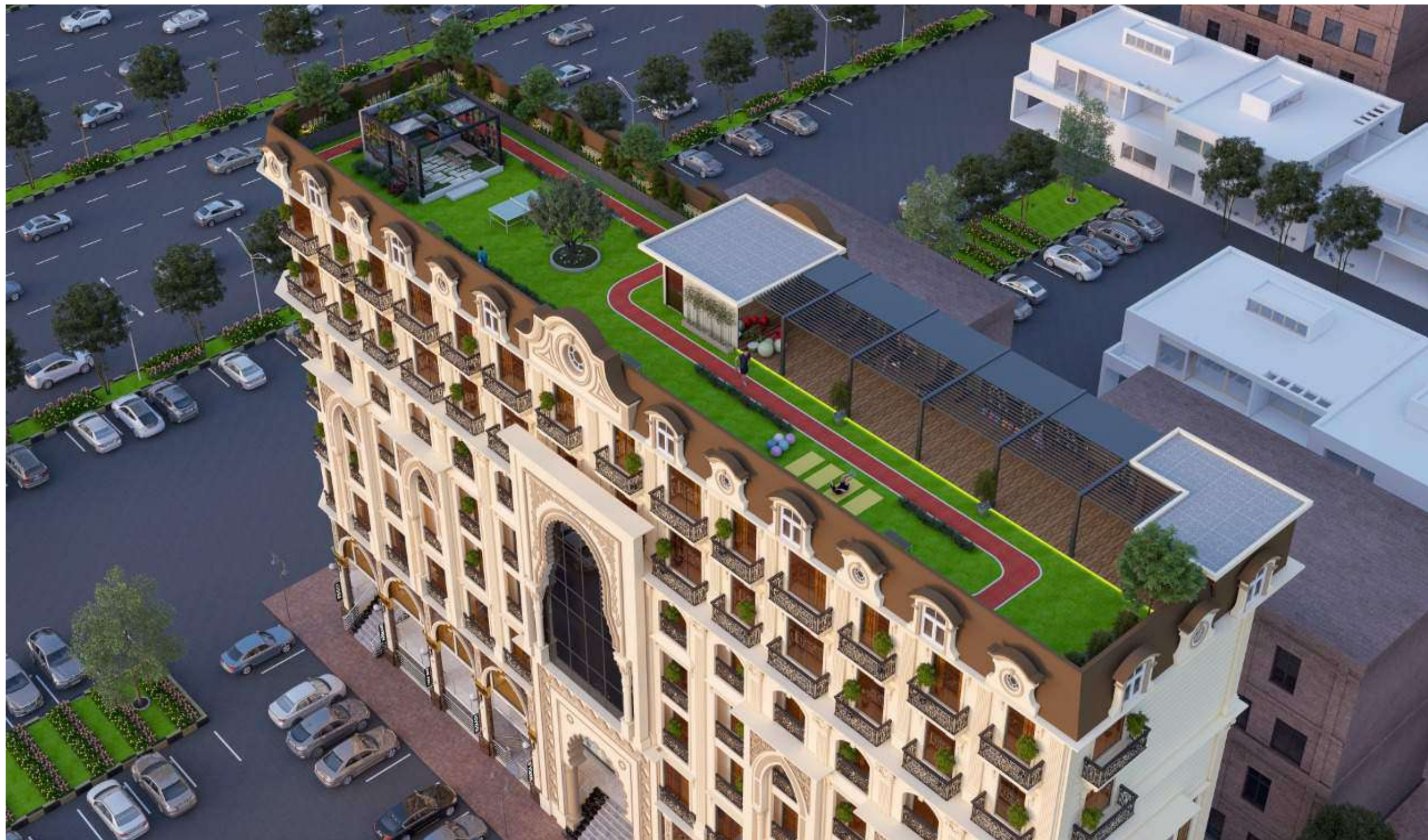
Higher Rental  
Income Prospects

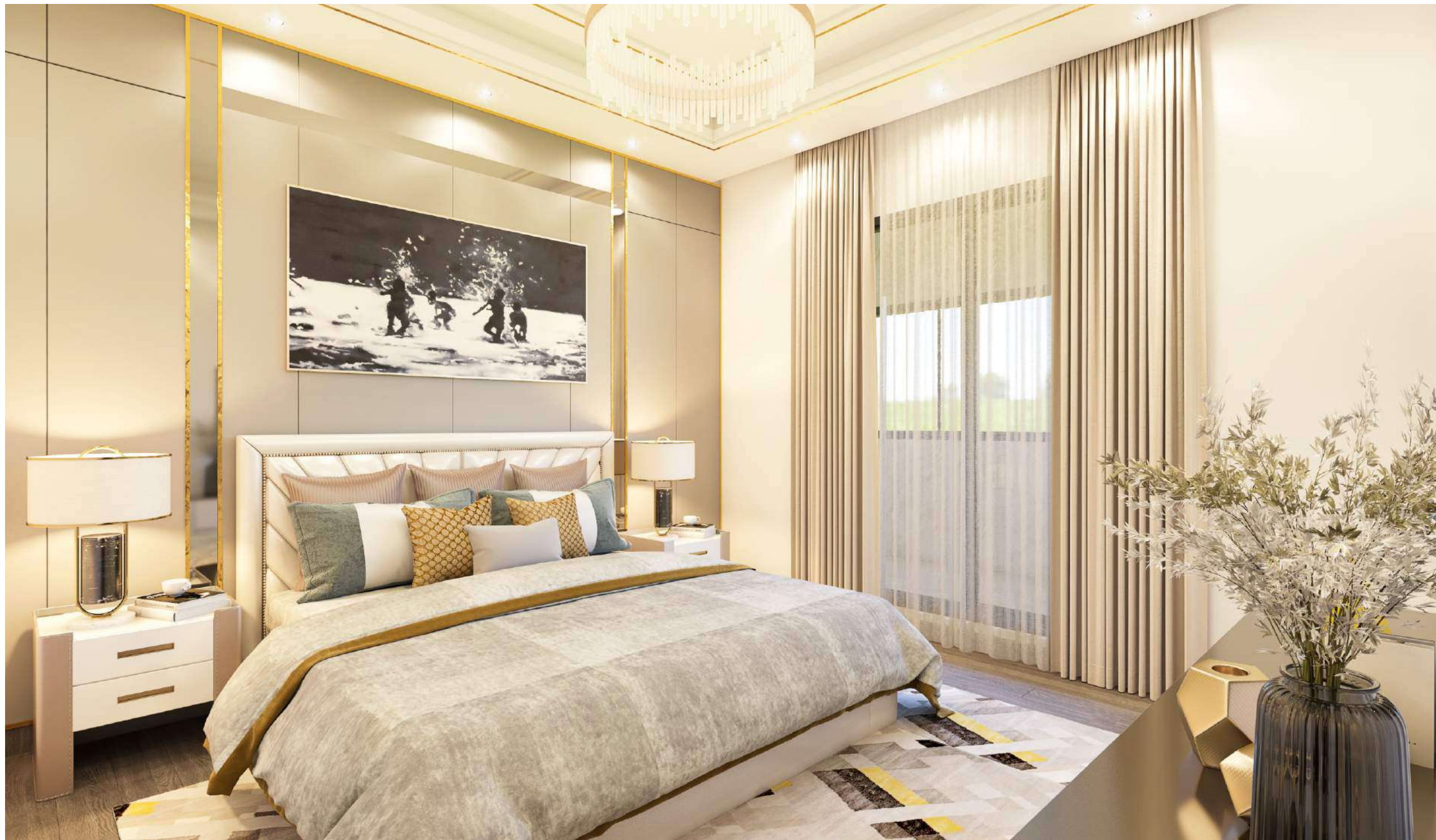




YOUR NEXT  
ADDRESS

AT THE HEART OF  
BAHRIA BUSINESS DISTRICT







# EXCLUSIVE FEATURES



Rooftop cross-fit gym



High-ceiling floors



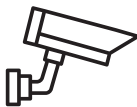
Internet connectivity in common areas



Dedicated lift and staircases to access commercial shops and residential apartments

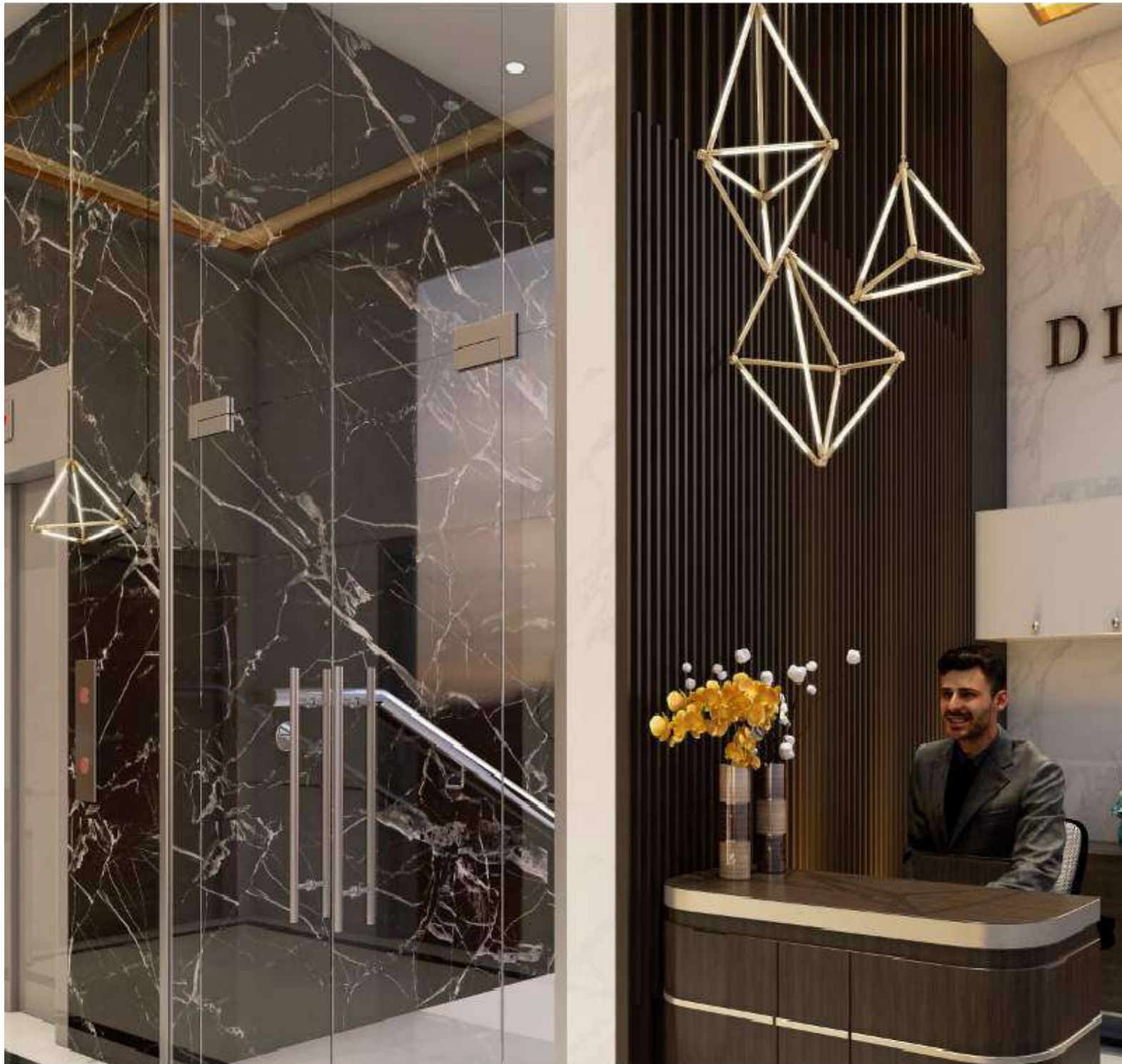


Smart access cards for apartment residents



24/7 on-ground security and CCTV surveillance





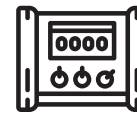
## EXCLUSIVE FEATURES



Separate reception for  
residential apartments



Water sprinklers



Standby generator for  
electricity backup



Smoke detectors



Fire rescue exit



Designated car parking for  
residential apartments



# AN IDEALLY LOCATED DESTINATION

Bahria Business District in Phase 8, Rawalpindi has many key facilities and institutions. With metro grade facilities, educational, medical, entertainment and recreation venues within the community; it has been the trend setter in real estate development across the country.

- 05 Mins

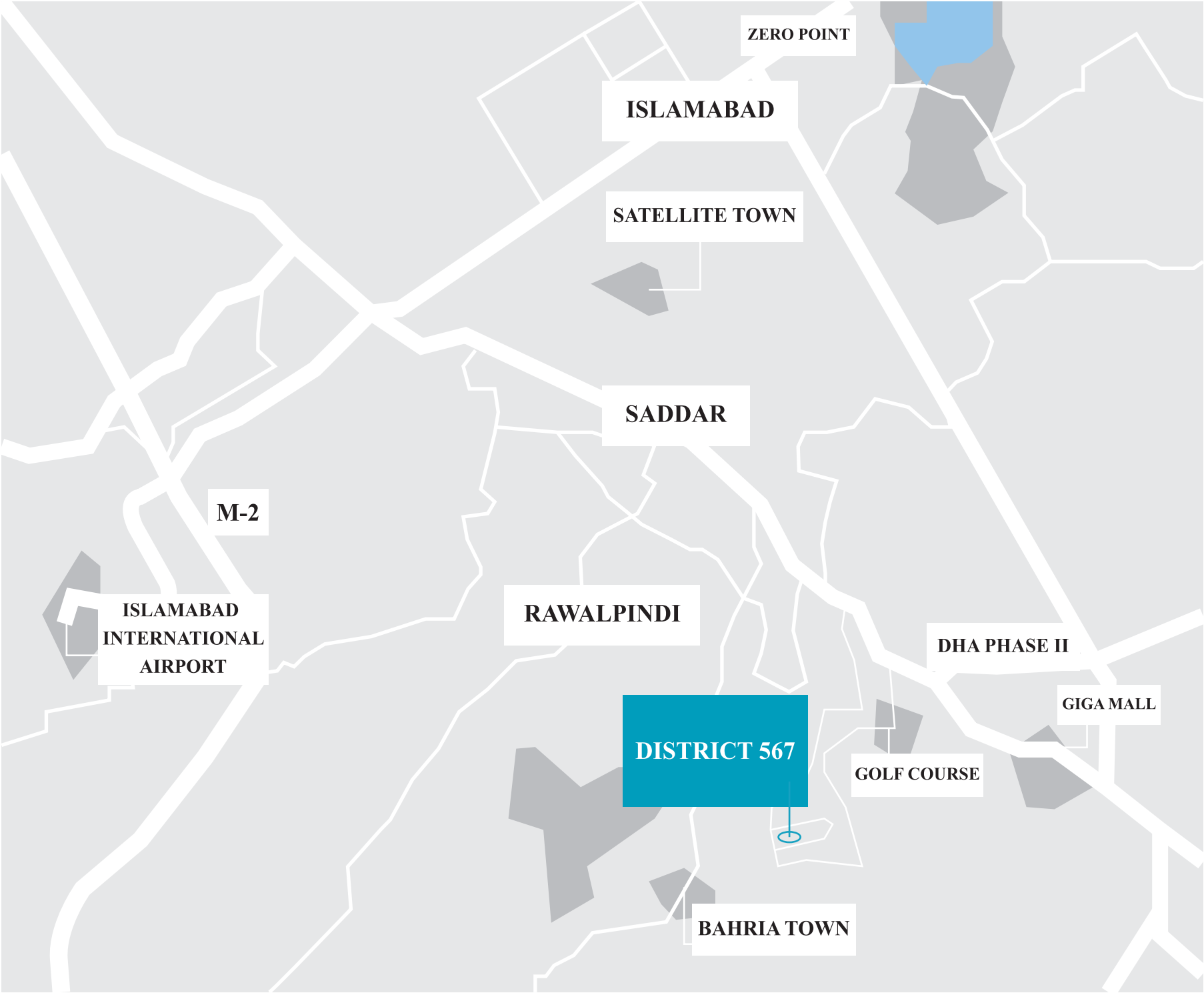
18-hole Standard  
USGA Golf Course
- 10 Mins

GT Road  
& Giga Mall
- 15 Mins

Saddar Rawalpindi
- 25 Mins

Islamabad  
Zero Point
- 35 Mins

Islamabad  
International Airport



## COMMERCIAL SHOPS

Conveniently located over 03 floors, the commercial shops at DISTRICT 567 offers an opportunity to place your business in close proximity to over 5000 residents living in Bahria Town Phase 7 and 8, Rawalpindi.

FLOOR	NO OF UNITS	GROSS AREA
Lower Ground	06	560 to 1,118 (sq.ft)
Ground Floor	05	443 to 1,467 (sq.ft)
First Floor	17	198 to 1,065 (sq.ft)







**FURNISHED/  
UNFURNISHED OFFICES**



# ONE-BEDROOM APARTMENT

Featuring an en-suite master bedroom, living room and a walk-in kitchenette, the one-bedroom apartment offers a cozy and chic living space.

FLOOR	NO OF UNITS	GROSS AREA
Fourth Floor	03	678 to 855 (sq.ft)
Fifth Floor	03	678 to 855 (sq.ft)
Sixth Floor	03	681 to 801 (sq.ft)



## ONE-BEDROOM APARTMENT





**ONE-BEDROOM APARTMENT**



**TWO-BEDROOM APARTMENT**

# TWO-BEDROOM APARTMENT

Featuring two en-suite master bedrooms and a walk-in kitchenette fitted with world-class modern amenities, the two-bedroom apartment offers ample space for a family.

FLOOR	NO OF UNITS	GROSS AREA
Fourth Floor	03	1136 to 1379 (sq.ft)
Fifth Floor	03	1136 to 1379 (sq.ft)
Sixth Floor	03	1174 to 1558 (sq.ft)
Seventh Floor	01	1037 (sq.ft)





**TWO-BEDROOM APARTMENT**



# THREE-BEDROOM APARTMENT

Overlooking the scenic valley of Bharia Town, featuring three en-suite bedrooms, a spacious living room, and a cozy kitchen fitted with world-class amenities, the three-bedroom apartment offers unmatched luxury and comfort.

FLOOR	NO OF UNITS	GROSS AREA
Seventh Floor	03	1649 to 1729 (sq.ft)



**THREE-BEDROOM APARTMENT**



**THREE-BEDROOM APARTMENT**

# ABOUT H&H DEVELOPERS

H&H Builders and Developers have a vision of bringing a modern and world-class way of living to Pakistan. We have put together a contemporary design, sustainable development and comfortable living to create an Ultimate Lifestyle Destination.

For more information or to book a unit at DISTRICT 567, please call or WhatsApp on +92 3111107770 and talk to our Property Advisor directly from 10 AM to 9 PM (PST) or email us at [sales@hnhdevelopers.com](mailto:sales@hnhdevelopers.com)

## ISLAMABAD

To meet one of our Property Experts, please visit our Head Office located at Office # 03, 3rd Floor, P. No. 34, G-11 Markaz, Islamabad.

## RAWALPINDI

Or site office at DISTRICT 567, Bahria Business District, Phase 8, Rawalpindi



CONSTRUCTION PARTNER

EMARAT



CONSTRUCTIONS

MARKETING PARTNER



SARMAYA  
PAKISTAN



**H&H**  
BUILDERS AND DEVELOPERS  
BUILDING DREAMS

